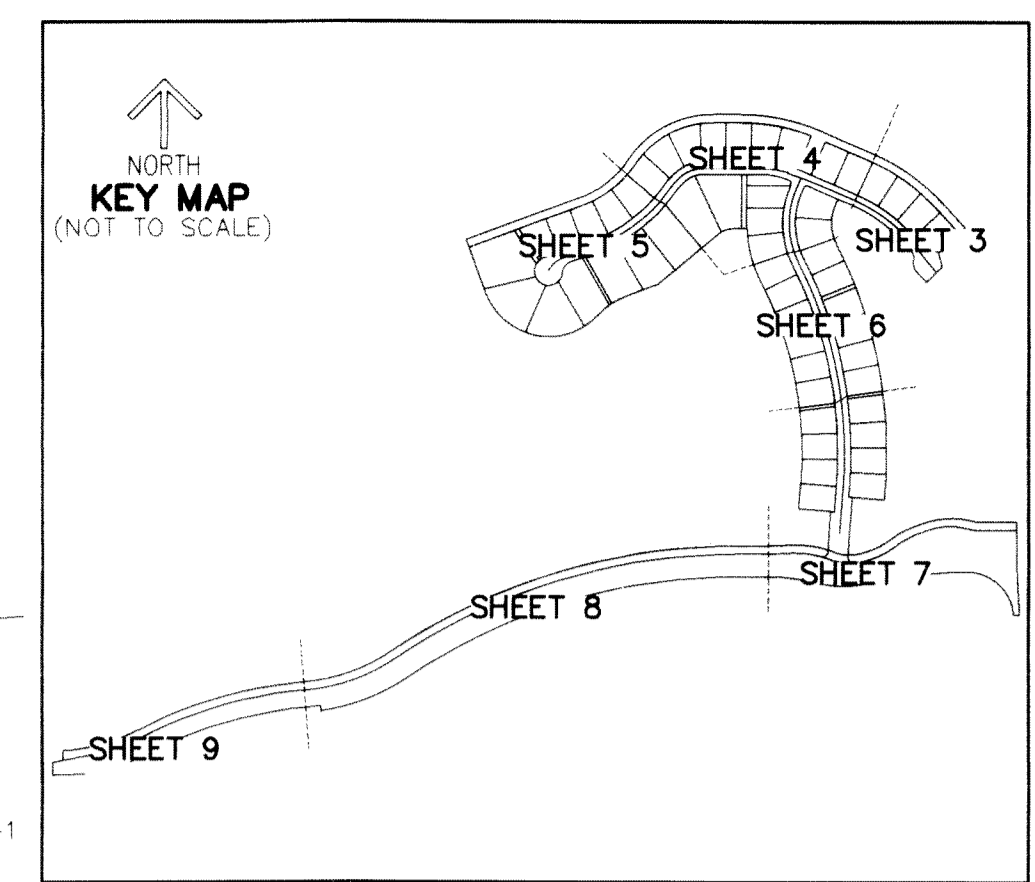


THIS INSTRUMENT PREPARED BY  
RONNIE L. FURNISS  
OF  
**CAULFIELD and WHEELER, INC.**  
SURVEYORS - ENGINEERS - PLANNERS  
7900 GLADES ROAD, SUITE 100  
BOCA RATON, FLORIDA 33434 - (561)392-1991  
CERTIFICATE OF AUTHORIZATION NO. LB3591  
AUGUST 2022

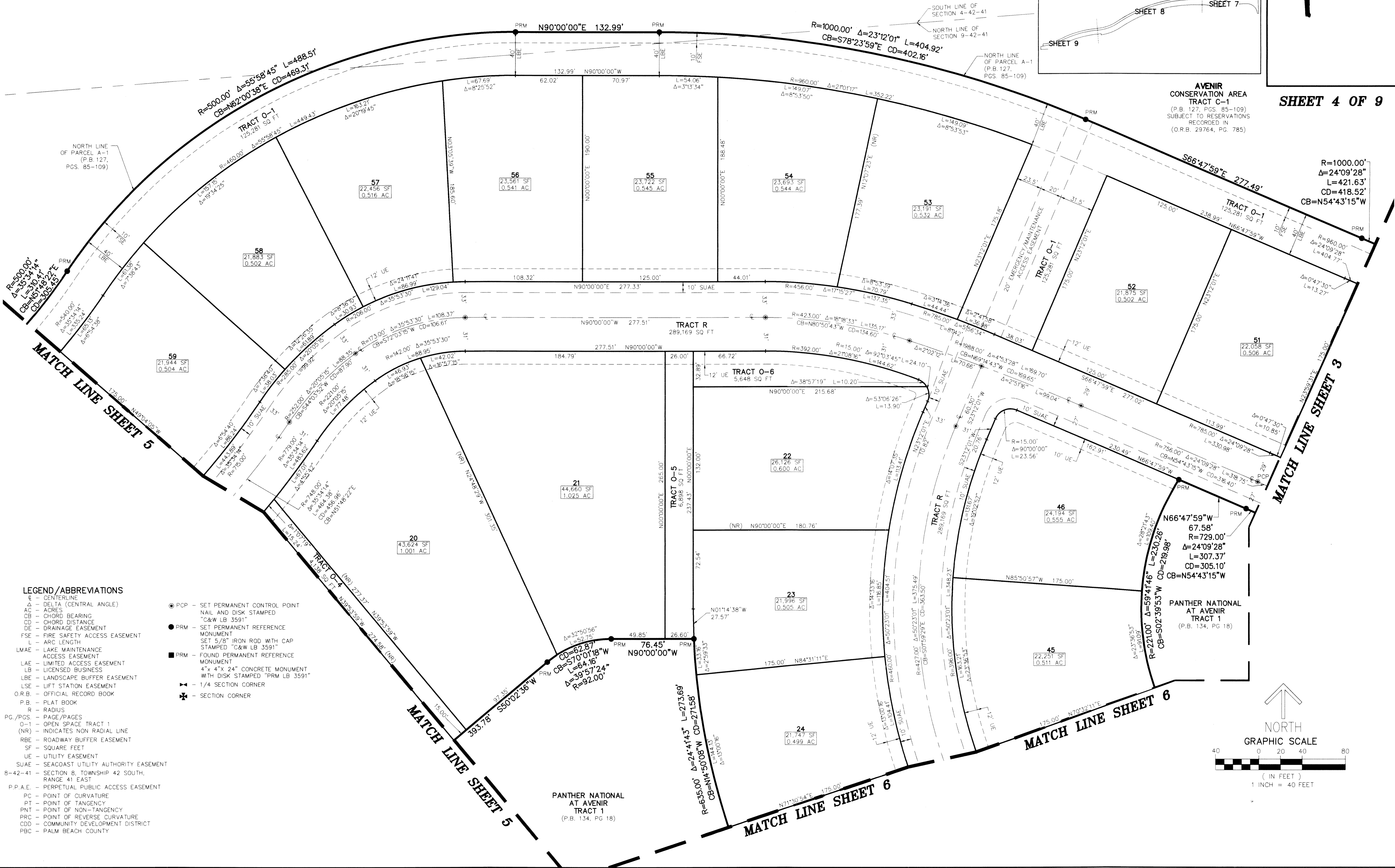
# PANTHER NATIONAL AT AVENIR POD 14

A REPLAT OF A PORTION OF TRACT 1 TOGETHER WITH ALL OF TRACT RBE1,  
PANTHER NATIONAL AT AVENIR, AS RECORDED IN  
PLAT BOOK 134, PAGE 18 OF THE PUBLIC RECORDS OF PALM BEACH COUNTY, FLORIDA,  
LYING IN SECTIONS 4 AND 9, TOWNSHIP 42 SOUTH, RANGE 41 EAST,  
CITY OF PALM BEACH GARDENS, PALM BEACH COUNTY, FLORIDA.



**SHEET 4 OF 9**

**AVENIR  
CONSERVATION AREA  
TRACT C-1**  
(P.B. 127, PGS. 85-109)  
SUBJECT TO RESERVATIONS  
RECORDED IN  
(O.R.B. 29764, PG. 785)



- LEGEND/ABBREVIATIONS**
- CL - CENTERLINE
  - Δ - DELTA (CENTRAL ANGLE)
  - AC - ACRES
  - CB - CHORD BEARING
  - CD - CHORD DISTANCE
  - DE - DRAINAGE EASEMENT
  - FSE - FIRE SAFETY ACCESS EASEMENT
  - L - ARC LENGTH
  - LMAE - LAKE MAINTENANCE ACCESS EASEMENT
  - LAE - LIMITED ACCESS EASEMENT
  - LB - LICENSED BUSINESS
  - LBE - LANDSCAPE BUFFER EASEMENT
  - LSE - LIFT STATION EASEMENT
  - O.R.B. - OFFICIAL RECORD BOOK
  - P.B. - PLAT BOOK
  - R - RADIUS
  - PG./PGS. - PAGE/PAGES
  - O-1 - OPEN SPACE TRACT 1
  - (NR) - INDICATES NON-RADIAL LINE
  - RBE - ROADWAY BUFFER EASEMENT
  - SF - SQUARE FEET
  - UE - UTILITY EASEMENT
  - SUAE - SEACOAST UTILITY AUTHORITY EASEMENT
  - 8-42-41 - SECTION 8, TOWNSHIP 42 SOUTH, RANGE 41 EAST
  - P.P.A.E. - PERPETUAL PUBLIC ACCESS EASEMENT
  - PC - POINT OF CURVATURE
  - PT - POINT OF TANGENCY
  - PNT - POINT OF NON-TANGENCY
  - PRC - POINT OF REVERSE CURVATURE
  - CDD - COMMUNITY DEVELOPMENT DISTRICT
  - PBC - PALM BEACH COUNTY
- PCP - SET PERMANENT CONTROL POINT  
NAIL AND DISK STAMPED  
"C&W LB 3591"
  - PRM - SET PERMANENT REFERENCE  
MONUMENT  
SET 5/8" IRON ROD WITH CAP  
STAMPED "C&W LB 3591"
  - PRM - FOUND PERMANENT REFERENCE  
MONUMENT  
4" x 4" x 24" CONCRETE MONUMENT  
WITH DISK STAMPED "PRM LB 3591"
  - ✱ - 1/4 SECTION CORNER
  - ✱ - SECTION CORNER

PANTHER NATIONAL  
AT AVENIR  
TRACT 1  
(P.B. 134, PG 18)

